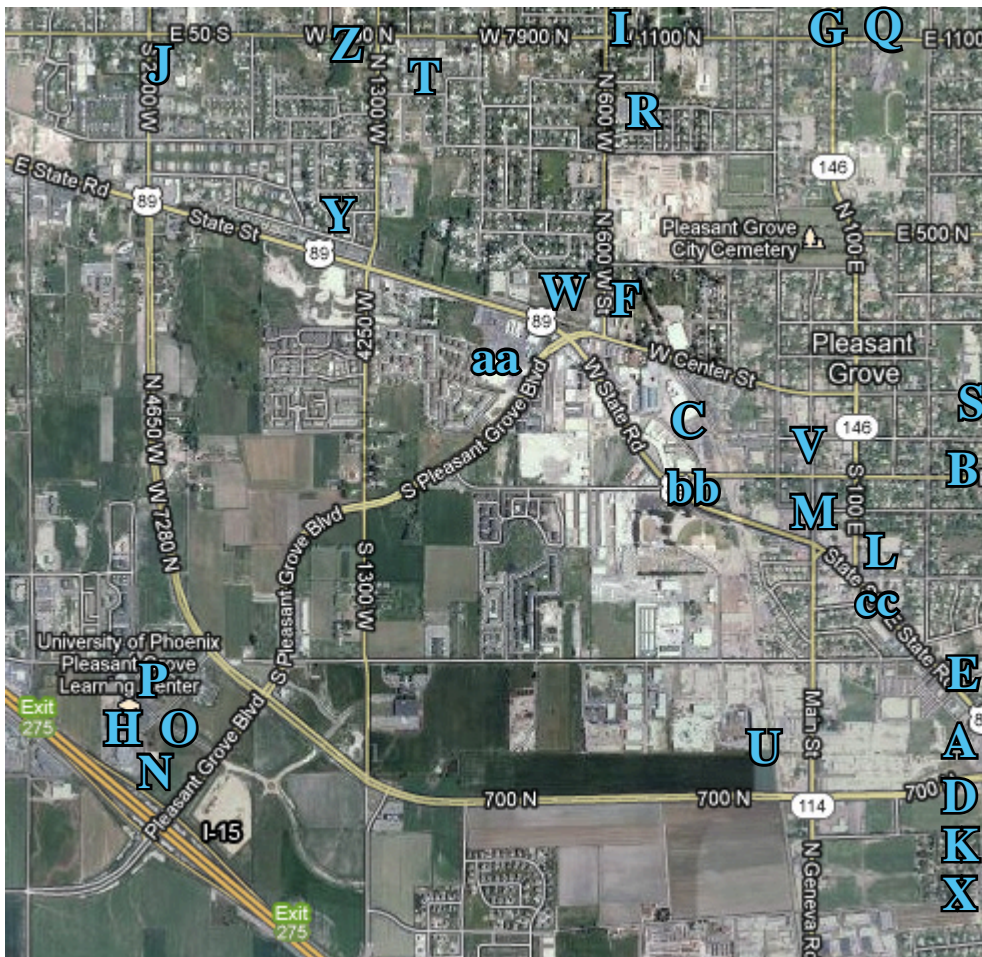


Office Spaces for Lease or Sale



	Name and Address	Size
A	Pleasant Grove Town Center 931 West State Street	1102-7600 SF
B	Dana Point Retail 597 S Pleasant Grove Blvd	8850 SF
C	Timponogos Dental 31 West 100 South	2324 SF
D	Johnston Office Building 457 East 1000 South	2000 SF
E	373 E 790 S	1049 SF
F	Copper Lefe 1300 West State Street	Two (2) 44,202 SF
G	Mayfield North Office Plaza 210 South 2500 West	29,400 SF
H	Grove Creek Center 2000 West Grove Parkway	29,400 SF
I	Mayfield Financial Center 2351 West 450 South	17,000 SF
J	All Star Auto Plaza 656 North 2000 West	Contact for Size
K	Pleasant Grove Offices 461 East 1000 South, Suite A	2,000 SF
L	Former Capelli 200 East State Street	8,556 SF
M	Thayne Insurance 385 South Main Street	1,290 SF
N	2174 West Grove Parkway	Contact For Size
O	Hewson Builder 2174 West Grove Parkway	20,000 SF
P	West Grove Plaza 2450 West Sam White Lane	2,000 - 21,000 SF
Q	Mayfield North Office Plaza 210 South 2500 West	29,400 SF
R	Mayfield Financial Center 2351 West 450 South	17,000 SF
S	Dana Point Retail Center 700 South Pleasant Grove Blvd	1,625 - 14,625 SF
T	Miller Medical Building 1988 West 930 North	Contact for Size
U	864 S Main #17	968 SF
V	140 S Main St	3,709 SF
W	571 W Center	4,686 SF
X	Lindon, Utah, across from Walmart on State Street, 945 South State Street	20,000 SF
Y	Capital Community Bank 1909 W. State Road	1,800 SF
Z	Timpview Professional Plaza 872 N. 2000 W.	4,024 SF
aa	TownCenter Plaza 145 S. Pleasant Grove Blvd, Suite 102	1,813 SF
bb	PG Office 399 E State St	1,900 SF
cc	238 E State Rd	1,482 SF

2012 Demographic Snapshot

	3-mile radius	15-mile radius
Population	70,000	531,000
Median age	27	25
Avg. household income	\$74,000	\$80,000
Median home price	\$232,000	\$252,000
Pop. with college degrees	42%	24%
Growth rate 2000-2010	50%	43%
Source: Claritas	visit us on the web: PLGrove.org	

Click on the address for website