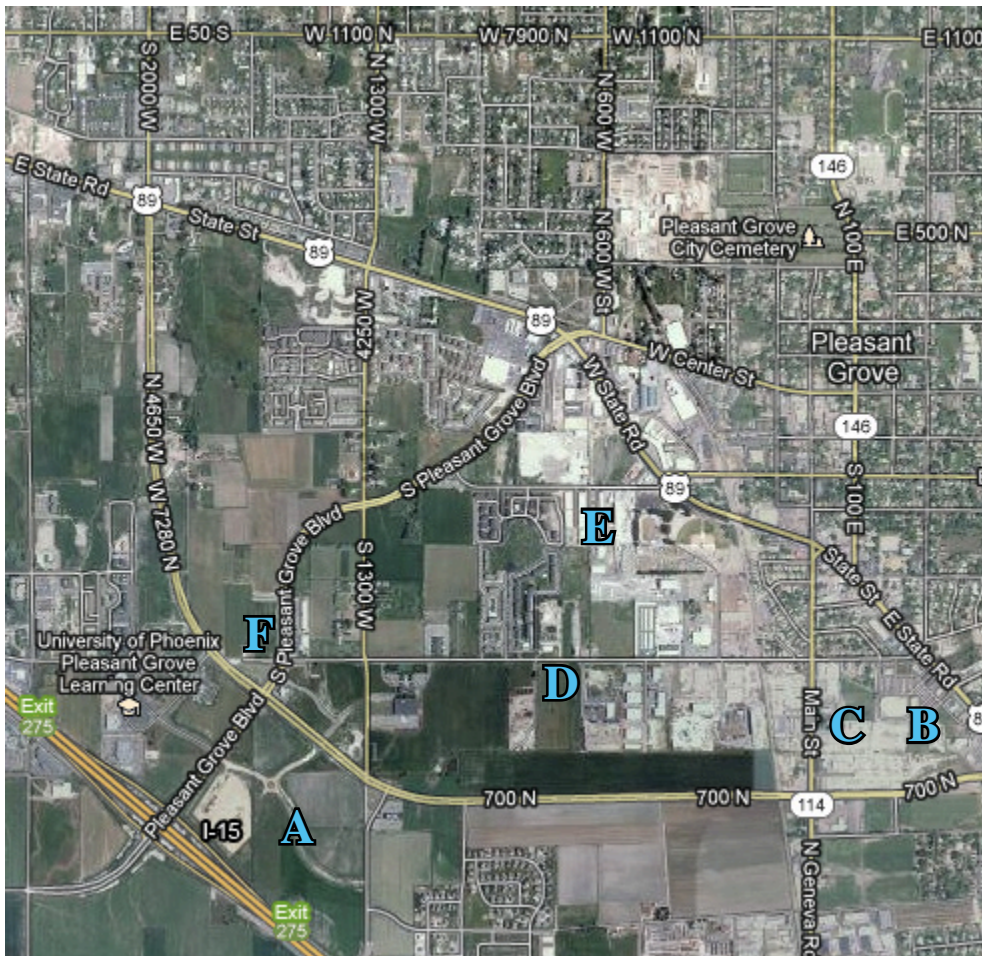


Large Commercial Site



	Address	Size
A	I-15 & Pleasant Grove Blvd	130 Acres
B	882 South State St	7.16 Acres
C	Village Square Land 882 South State	7.16 Acres
D	PG Commercial Land 650 West 700 South	5 Acres
E	Pre-Cast Concrete Production Plant 492-496 South 250 West	6.41 Acres
F	700 Pleasant Grove Blvd	8 Acres

Click on the address for website

2012 Demographic Snapshot

	3-mile radius	15-mile radius
Population	70,000	531,000
Median age	27	25
Avg. household income	\$74,000	\$80,000
Median home price	\$232,000	\$252,000
Pop. with college degrees	42%	24%
Growth rate 2000-2010	50%	43%
Source: Claritas	visit us on the web: PLGrove.org	