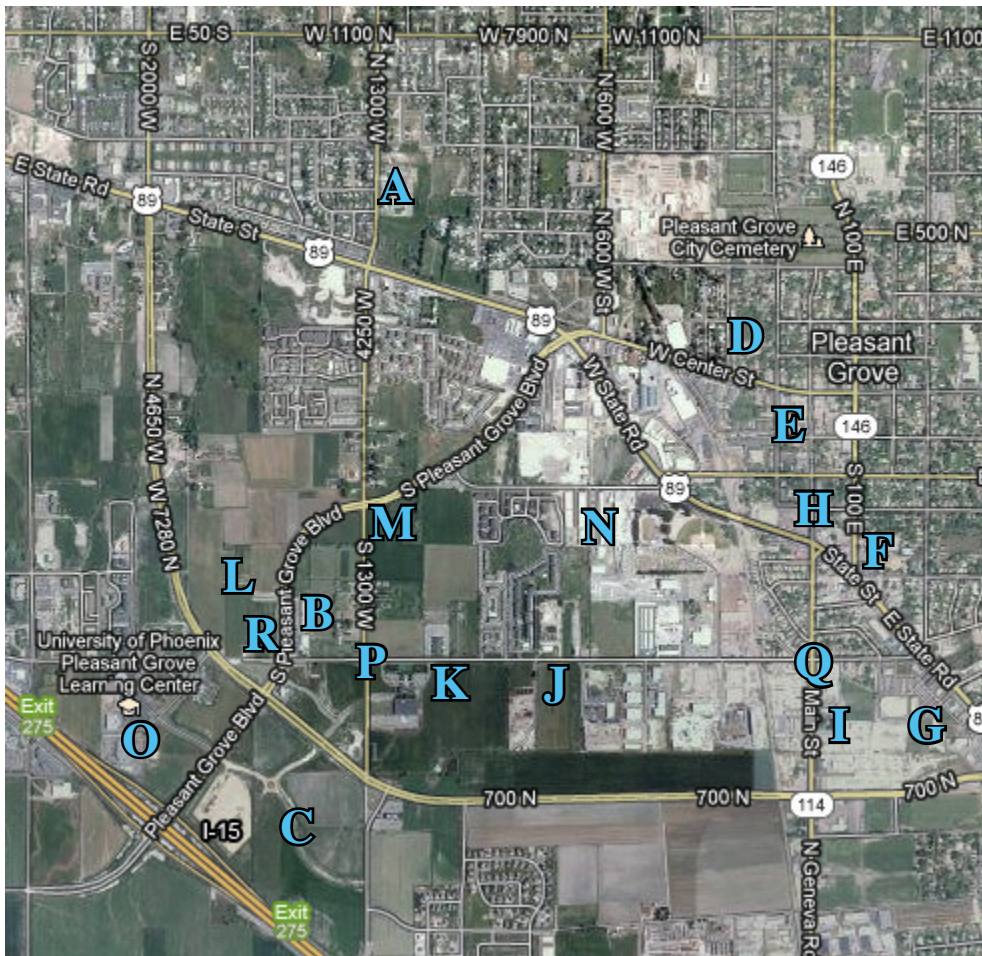


Available Land for Lease or Sale



	Address	Size
A	1140 W Garden Dr	3.16 Acres
B	700 W Pleasant Grove Blvd	1.65 Acres
C	I-15 & Pleasant Grove Blvd	130 Acres
D	135 W Center St	0.39 Acres
E	48 S 100 W	0.24 Acres
F	415 S 100 E	0.38 Acres
G	882 South State St	7.16 Acres
H	10 East 100 North	1.78 Acres
I	Village Square Land 882 South State	7.16 Acres
J	PG Commercial Land 650 West 700 South	5 Acres
K	Commercial Land 1360 West 700 South	3.17 Acres
L	Shadowwood Office Condos 300 South Pleasant Grove Blvd	Contact For Size
M	1300 West State Street	39,773 SF
N	Pre-Cast Concrete Production Plant 492-496 South 250 West	6.41 Acres
O	Grove Creek Centre Retail 2000 West Grove Parkway	65,000 SF
P	Pleasant Grove Blvd and Proctor Lane	4.81 Acres
Q	799 South Geneva Road	0.93 Acres
R	700 Pleasant Grove Blvd	8 Acres

Click on the address for website

2012 Demographic Snapshot

	3-mile radius	15-mile radius
Population	70,000	531,000
Median age	27	25
Avg. household income	\$74,000	\$80,000
Median home price	\$232,000	\$252,000
Pop. with college degrees	42%	24%
Growth rate 2000-2010	50%	43%
Source: Claritas	visit us on the web: PLGrove.org	