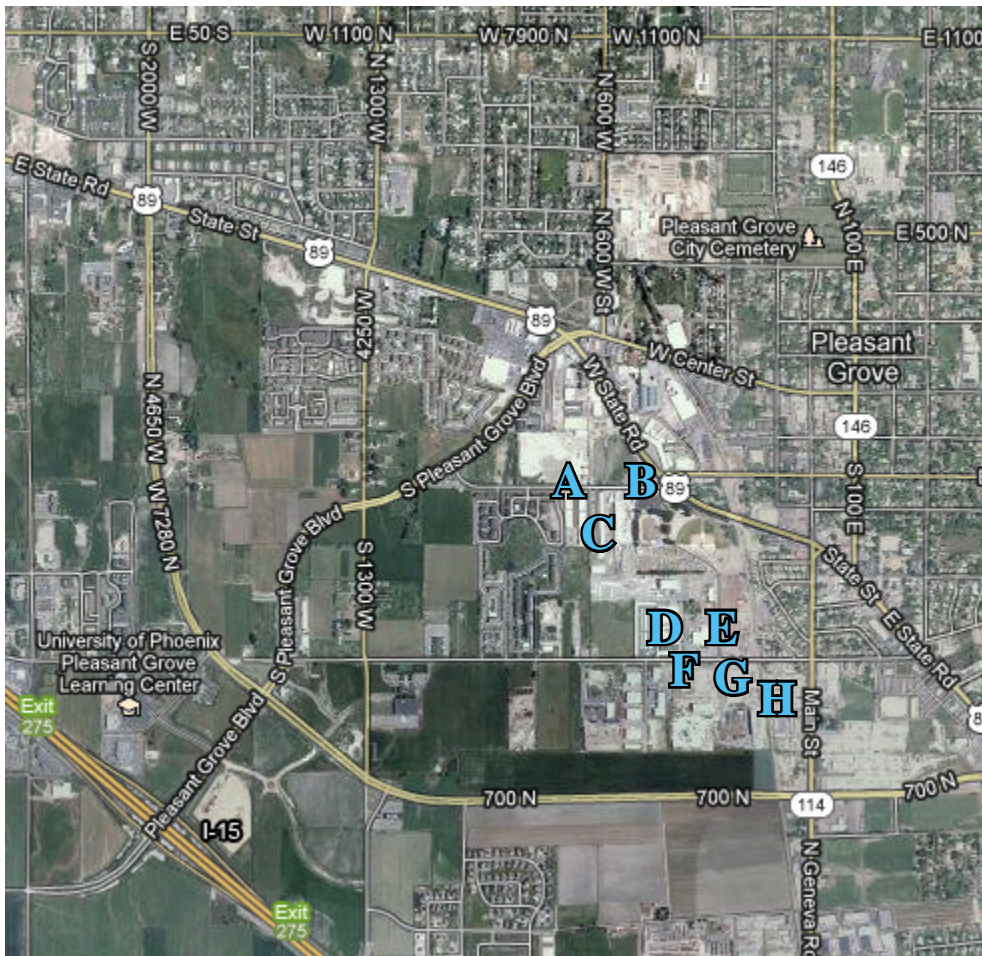


## Available Industrial Properties for Lease or Sale



	Address	Size
A	<a href="#">Pleasant Grove Warehouse 589 West 220 South</a>	5,740 SF
B	<a href="#">Bylund Warehouse 470 South 640 West</a>	12,800 SF
C	<a href="#">Pleasant Grove Business Park 332 - 342 South 700 West</a>	7,920 SF
D	<a href="#">The Grove Warehouse 513 West 700 South</a>	4950 SF
E	<a href="#">The Grove - Bldg D 490 West 700 South</a>	4730-19800 SF
F	<a href="#">PG Business Park 473 South 640 West</a>	12,800 SF
G	<a href="#">357 S. 640 W.</a>	1,521 SF
H	<a href="#">Pre-Cast Concrete Production Plant 492-496 South 250 West</a>	20,000 SF

Click on the address for website

### 2012 Demographic Snapshot

	3-mile radius	15-mile radius
Population	70,000	531,000
Median age	27	25
Avg. household income	\$74,000	\$80,000
Median home price	\$232,000	\$252,000
Pop. with college degrees	42%	24%
Growth rate 2000-2010	50%	43%
Source: Claritas	visit us on the web: <a href="http://PLGrove.org">PLGrove.org</a>	