

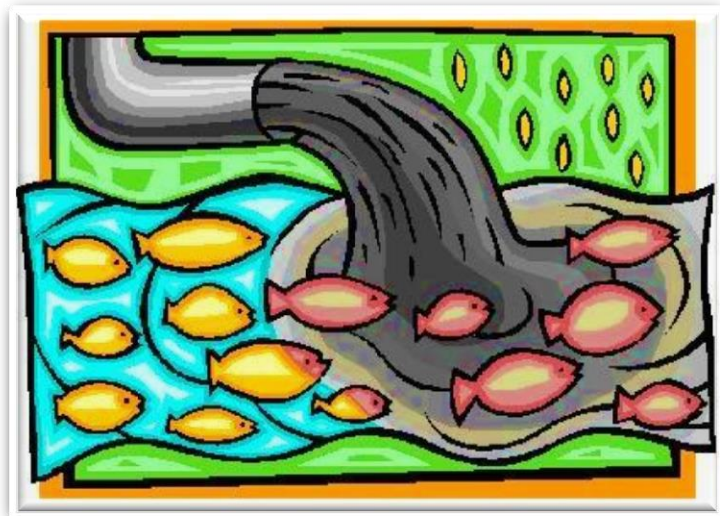
# Storm Water Pollution Prevention:

## PAINT

If you're using latex-water based paints, you can wash your paint brushes directly in your kitchen or bathroom sink.

**Don't rinse your brushes into the street.**

If you use oil-based paints, clean them by rinsing brushes with solvent in a container.



**NEVER DUMP PAINT IN  
THE TRASH, GUTTER,  
OR STORM DRAIN**

**Report Illegal Discharges to the  
Storm Drain System Supervisor**

801-785-2941

**12 STEP STORM DRAIN AWARENESS PROGRAM**

